

## Lithogenic bile formation

### Biology of bile acids

According to the hydrophilic-hydrophobic index, the bile acids are divided into hydrophilic and hydrophobic ones (table 1) (1-3).

Table 1.

#### Hydrophilic-hydrophobic index (HHI) of bile acids in mammals (2).

Bile acids	HHI of bile acids	Mammals
$\beta$ -Hyocholic acid ( $\beta$ -HCA)	-0.60	rats
$\alpha$ -Muricholic acid ( $\alpha$ -MCA)	-0.51	rats
$\beta$ -Muricholic acid ( $\beta$ -MCA)	-0.40	rats
Murideoxycholic acid (MDCA)	-0.33	rats
Ursodeoxycholic acid (UDCA)	-0.17	bears
$\alpha$ -Hyocholic acid ( $\alpha$ -HCA)	-0.03	pigs
Hyodeoxycholic acid (HDCA)	+0.09	pigs
Cholic acid (CA)	+0.23	human
Chenodeoxycholic acid (CDCA)	+0.83	human
Deoxycholic acid (DCA)	+0.98	human, primates, rabbits
Lithocholic acid (LCA)	+1.23	human

If the hydrophobic index is less than that of cholic acid (CA), the bile acids are hydrophilic, if it is more than the hydrophobic index, they are hydrophobic (1-3). The primary bile acids are more hydrophilic than the secondary ones, but the taurine conjugates of the bile acids are more hydrophilic than the glycine ones (1-3). The hydrophilic bile acids have hepatoprotective properties [muricholic (MCA) > ursodeoxycholic (UDCA) > cholic (CA)] (4, 5). The hydrophobic bile acids are hepatotoxic [lithocholic (LCA) > deoxycholic (DCA) > chenodeoxycholic (CDCA) > CA] (1-7). Depending on the concentration, the hydrophobic bile acids cause cholestasis (LCA > DCA), necrosis (LCA > DCA) or apoptosis of hepatocytes (LCA > DCA > CDCA) (2-7).

Furthermore, DCA is cancerogenic (8). Experiments on animals showed that it causes cancer of the colon (9). The hydrophilic bile acids prevent the development of cholestasis or necrosis/apoptosis of hepatocytes (UDCA, MCA), as well as cancer of the colon (UDCA) (4-7, 9).

In serum up to 40% of bile acids are transported with HDL, up to 15% with LDL (10). The mechanism of binding of bile acids with lipoproteins depends on their hydrophobic index (CDCA > DCA > UDCA > CA > 7-epicholic acid) (10). In the liver, 60-80% of bile acids are uptake during one passage of portal blood (11). In earlier experiments on hamsters, it was demonstrated that the hepatic LDL uptake could influence the bile flow rate, the biliary secretion of bile acids and cholesterol (12, 13). The composition and concentration of bile acids participating in the enterohepatic circulation can modulate the LDL receptor activity and the receptor-dependent LDL uptake in the liver. More hydrophilic UDCA stimulates the receptor-dependent LDL uptake in the liver, but more hydrophobic CDCA decreases the LDL receptor activity (12, 13). It was also shown that the addition of hydrophobic CDCA to the hypercholesterolemic diet reduces the decrease of HDL concentration in serum, but the addition of hydrophilic UDCA causes the opposite effect (14, 15).

In hepatocytes, the bile acids may inhibit the activity of HMG-CoA reductase and cholesterol-7 $\alpha$ -hydroxylase, depending on their concentration and hydrophobic index (DCA > CDCA > CA > UDCA) (2, 16-18). The hydrophilic bile acids stimulate the secretion of the hepatic bile (UDCA > CA), the hydrophobic ones lower it (LCA > DCA > CDCA) (19-21). UDCA and CDCA reduce the secretion of biliary cholesterol in the hepatic bile, but CA and DCA raise it (1, 19-21). In the gallbladder bile, the hydrophobic bile acids form mixed (bile acid-phospholipid-cholesterol) and simple

(bile acid-cholesterol) micelles (DCA > CDCA > CA), but the hydrophilic bile acids form liquid crystalline lamellas (MCA > UDCA); that is, the lower the hydrophobic index of bile acids, the lower the ability to form micelles (22-25).

In the ileum, CA and CDCA raise the absorption of cholesterol, but UDCA and DCA reduce it (26-29). During the process of enterohepatic circulation, in the ileum and the colon, anaerobic bacteria promote 7 $\alpha$ -dehydroxylation of the primary bile acids (hyocholic (HCA), MCA, CA, CDCA) and the formation of the secondary bile acids (hyodeoxycholic (HDCA), murideoxycholic (MDCA), DCA, LCA) (1, 2, 30, 31). The secondary bile acids are more hydrophobic than the primary ones (HDCA > HCA, MDCA > MCA, DCA > CA, LCA > CDCA) (1-3). The secondary bile acids are usually poorly absorbed in the ileum and the colon and are excreted with feces (1-3).

### The mechanism of "lithogenic" bile formation

In patients with chronic calculous cholecystitis, there is a marked increase of the COX-2 expression. Previously, we had demonstrated the increased COX-2 expression in the gallbladder wall in the gallbladder specimens which were obtained from 21 patients with chronic calculous cholecystitis after cholecystectomy (32).

An increase of COX-2 expression in the gallbladder wall (n=21) was observed in 86% of the smooth muscle cells, in 81% of the epithelial cells, in 71% of the vascular smooth muscle cells, in 57% of the stromal cells and in 37% of the Rokitansky-Aschoff sinuses (32).

At mild degree of inflammation in the gallbladder wall (n=12), the COX-2 expression was increased in 83% of the epithelial cells, in 78% of the vascular smooth muscle cells, in 75% of the smooth muscle cells, in 33% of the stromal cells and in 17% of the Rokitansky-Aschoff sinuses.

At moderate and severe degree of inflammation in the gallbladder wall (n=9), the COX-2 expression was increased in 100% of the smooth muscle cells, in 89% of the vascular smooth muscle cells, in 78% of the epithelial cells, in 78% of the stromal cells and in 67% of the Rokitansky-Aschoff sinuses.

Positive correlations exist between the degree of inflammation in the gallbladder wall and the degree of COX-2 expression in the smooth muscle cells ( $r = +0.71$ ,  $p < 0.001$ ) and in the vascular smooth muscle cells ( $r = +0.51$ ,  $p < 0.001$ ).

In 8 gallbladder specimens with gastric metaplasia, an increase of COX-2 expression was seen in 100% of the epithelial cells, in 87% of the smooth muscle cells, in 75% of the vascular smooth muscle cells, in 63% of the stromal cells and in 37% of the Rokitansky-Aschoff sinuses. In this group, a positive correlation was seen between the degree of inflammation in the gallbladder wall and the degree of COX-2 expression in the stromal cells ( $r = +0.72$ ,  $p < 0.05$ ).

In 13 gallbladder specimens without metaplasia, an increased COX-2 expression was determined in 85% of the smooth muscle cells, in 69% of the epithelial cells, in 69% of the vascular smooth muscle cells, in 54% of the stromal cells and in 38% of the Rokitansky-Aschoff sinuses. In this group, a positive correlation was revealed between the degree of inflammation in the gallbladder wall and the degree of COX-2 expression in the smooth muscle cells ( $r = +0.82$ ,  $p < 0.05$ ).

In patients with chronic calculous cholecystitis, a negative correlation was revealed between the absorption function of gallbladder and the thickness of the gallbladder wall ( $r = -0.71$ ,  $p < 0.05$ ) (33).

Obtained data demonstrate:

1. The excessive COX-2 expression in the smooth muscle cells, in the vascular smooth muscle cells and in the epithelial cells of the gallbladder may be the cause of chronic aseptic inflammation, of the decrease of water absorption and of the decrease of hepatic bile "passage" into the gallbladder up to 35%.
2. The excessive COX-2 expression in the smooth muscle cells may be the cause of gallbladder hypomotility and biliary pain.
3. The excessive COX-2 expression in the smooth muscle cells, in the vascular smooth muscle cells and in the epithelial cells of the gallbladder may be the cause of increased thickness of the gallbladder wall.
4. The excessive COX-2 expression in the epithelial cells of the gallbladder may be the cause of hypersecretion of the biliary glycoprotein mucin into the gallbladder lumen and of increase of the biliary glycoprotein mucin concentration in the gallbladder bile.

Taking account the fact that the excessive COX-2 expression in the smooth muscle cells, in the vascular smooth muscle cells and in the epithelial cells of the gallbladder may appear at the early stage of the development of cholecystolithiasis, then the excessive COX-2 expression in the smooth muscle cells, in the vascular smooth muscle cells and in the epithelial cells of the gallbladder may be the physical cause of appearance of the chronic intrahepatic "bland" cholestasis and the "lithogenic" gallbladder bile formation:

1) to decrease of water absorption by the epithelial cells of mucous gallbladder and to promote the reduce of the hepatic bile inflow into the gallbladder (the limitation of "passive" passage of the hepatic bile) and to promote the reduce of the total bile acids concentration in the gallbladder bile;

2) to decrease of vesicular cholesterol absorption by the epithelial cells of mucous gallbladder and to promote the increase of cholesterol concentration in the phospholipid vesicles in the gallbladder bile;

3) to decrease of hydrophilic proteins absorption by the epithelial cells of mucous gallbladder and to promote the increase of hydrophilic proteins concentration in the gallbladder bile.

This process is accompanied by the increase of the vesicular cholesterol/total bile acids ratio and by the increase of the total biliary proteins/total bile acids ratio and it promote the rise of the rate of cholesterol monohydrate crystals precipitation on the epithelial cells of mucous gallbladder.

Hence, than the less is the absorption of vesicular cholesterol by the epithelial cells of mucous gallbladder, then the higher is the cholesterol concentration in the gallbladder bile and the less is the nucleation time of cholesterol monohydrate crystals in the gallbladder bile, and vice versa. Hence, the excessive COX-2 expression in the epithelial cells of the gallbladder decreases the absorption and concentration functions of the gallbladder and promotes the "lithogenic" gallbladder bile formation. The decrease of the evacuation function of the gallbladder (the excessive COX-2 expression in the smooth muscle cells) is the predisposing factor for the precipitation of cholesterol monohydrate crystals and for the formation of cholesterol gallstones (fig. 5).

The decrease of hepatic bile "passage" into the gallbladder promote the hepatic bile "passage" into the duodenum and increase the frequency of the gallbladder-independent enterohepatic circulation of bile acids and stimulate the formation of the hydrophobic hepatotoxic deoxycholic bile acid (DCA) (10, 34, 35).

The increase of the frequency of the gallbladder-independent enterohepatic circulation of bile acids and the increase of hydrophobic hepatotoxic deoxycholic bile acid concentration in the hepatocytes reduce the bile-acid-independent secretion of hepatic bile and stimulate the chronic intrahepatic "bland" cholestasis formation (36, 37). Hence, the decrease of hepatic bile "passage" into the gallbladder and, respectively, the increase of hepatic bile "passage" into the duodenum is the

cause of the increased frequency of the gallbladder-independent enterohepatic circulation of bile acids and of the appearance of the chronic intrahepatic "bland" cholestasis.

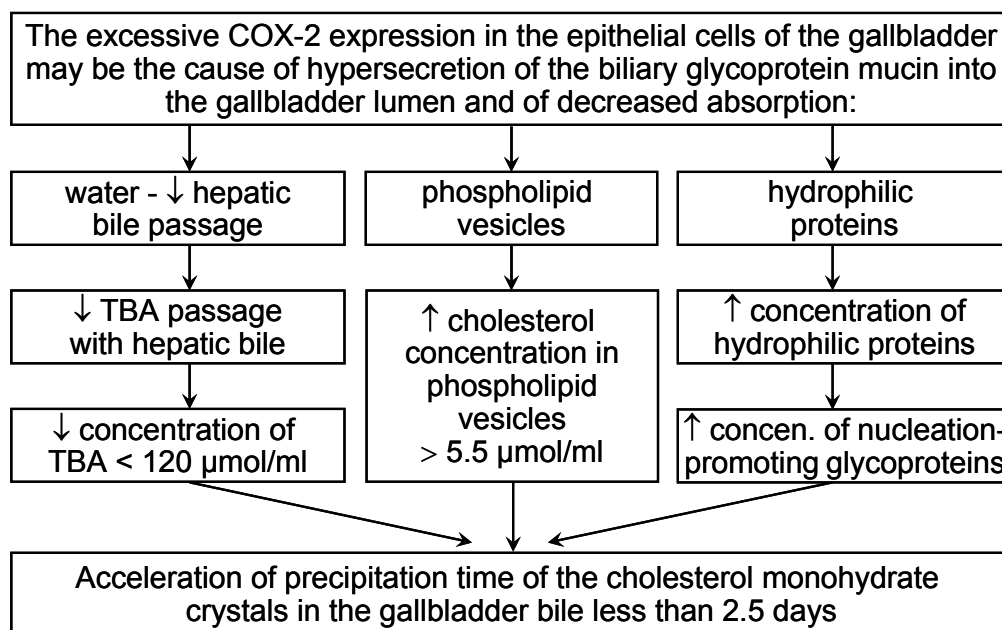


Fig. 5. Mechanism of the lithogenic gallbladder bile formation.

The chronic intrahepatic "bland" cholestasis is accompanied by the reduction of secretion volume of hepatic bile and by the rise of biliary cholesterol, total bile acids and total biliary protein concentration in the hepatic bile (fig. 6) (38, 39). The increase of biliary cholesterol concentration in the hepatic bile promote the rise of the biliary cholesterol concentration in phospholipid vesicles ( $r=+0.59$ ,  $p<0.05$ ) (40). The increase of total bile acids concentration in the hepatic bile reduces the stability of phospholipid vesicles and shortens the nucleation time of cholesterol monohydrate crystals ( $r=-0.53$ ,  $p<0.05$ ) (40).

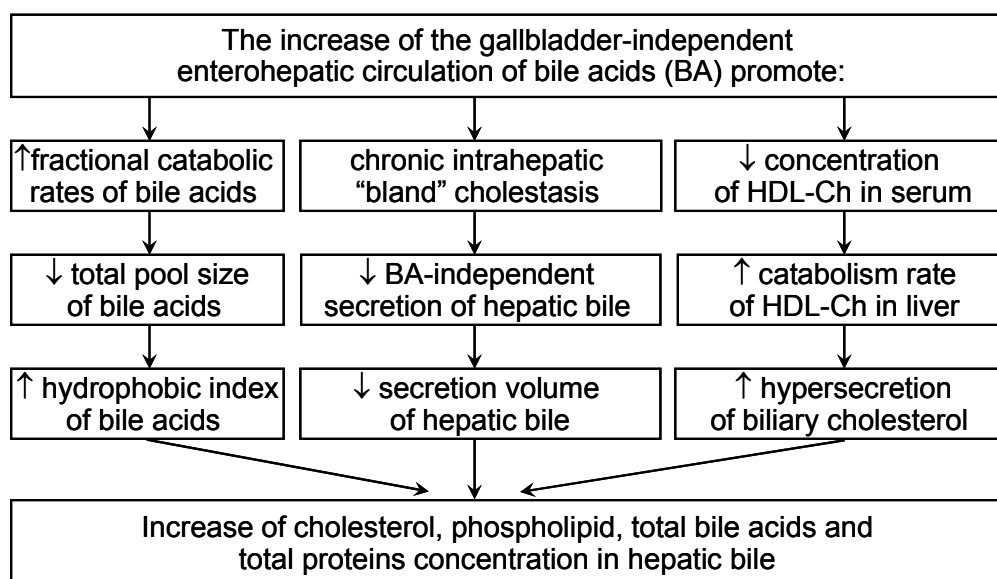
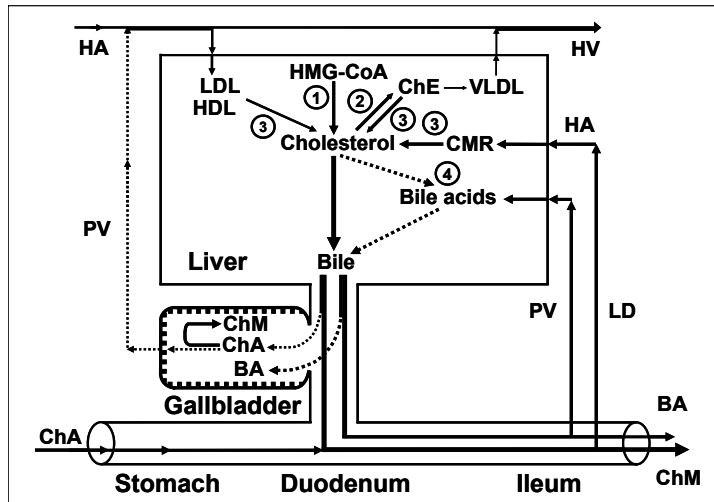


Рис. 6. Mechanism of the lithogenic hepatic bile formation.

We suppose that the chronic intrahepatic "bland" cholestasis, reducing the secretion rate and the hepatic bile volume, promotes the rise of biliary cholesterol, total bile acids and total biliary pro-

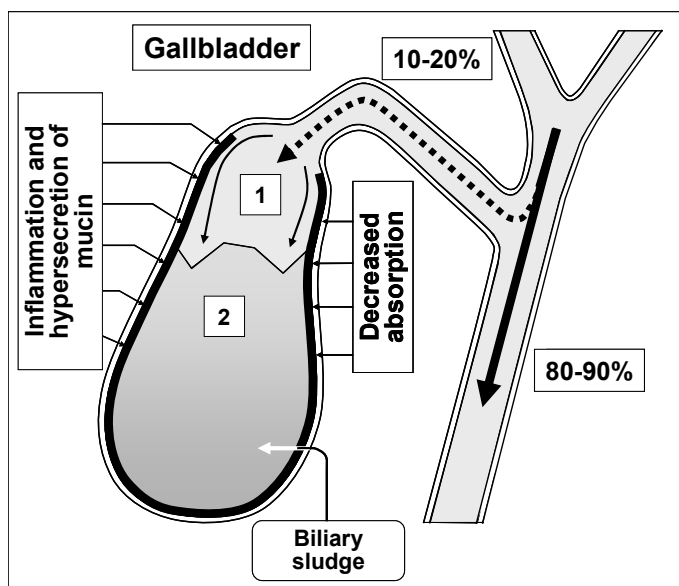
tein concentration in the hepatic bile, and shortens the nucleation time of cholesterol monohydrate crystals, what predispose to the "lithogenic" hepatic bile formation.

The decrease of absorption, concentration and evacuation functions of the gallbladder promote the "lithogenic" gallbladder bile formation, the chronic intrahepatic "bland" cholestasis promote the "lithogenic" hepatic bile formation (fig. 5, 6). These two factors determine the cholesterol gallstones formation.



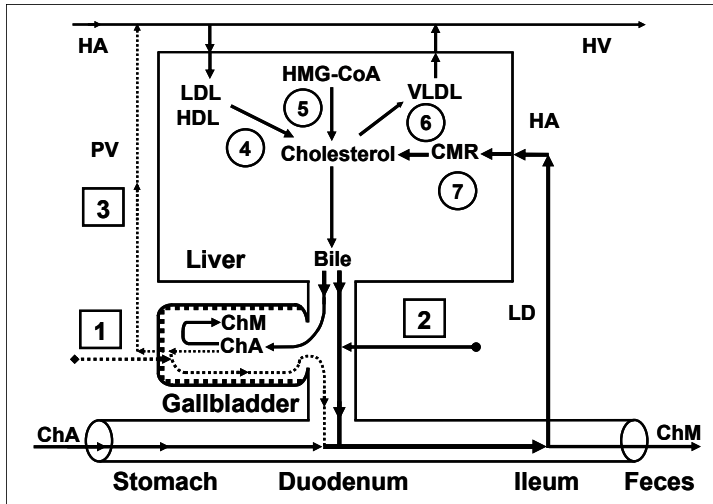
**Fig. 7. Exchange of cholesterol and bile acids** in patients with chronic acalculous cholecystitis and chronic calculous cholecystitis. **1** = synthesis of cholesterol; **2** = synthesis of cholesterol esters for VLDL; **3** = hydrolysis of cholesterol esters entered the hepatocytes with HDL and LDL, and hydrolysis of cholesterol esters entered the hepatocytes with CMR; **4** = synthesis of bile acids. **ChE** = cholesterol esters; **ChA** = cholesterol anhydrous; **ChM** = cholesterol monohydrate; **BA** = bile acids; **HA** = hepatic artery; **HV** = hepatic vein; **PV** = portal vein; **LD** = lymphatic duct.

In patients with chronic acalculous cholecystitis with biliary sludge, the formation of cholesterol gallstones is promoted by the decrease of absorption (the decrease of the water and phospholipid vesicles absorption), concentration (the decrease of total bile acids concentration in gallbladder bile) and evacuation (the decrease of the gallbladder-dependent output of biliary cholesterol) functions and by the increase of secretion (hypersecretion of glycoprotein mucin by the gallbladder mucosa) function of the gallbladder (fig. 7) (41).



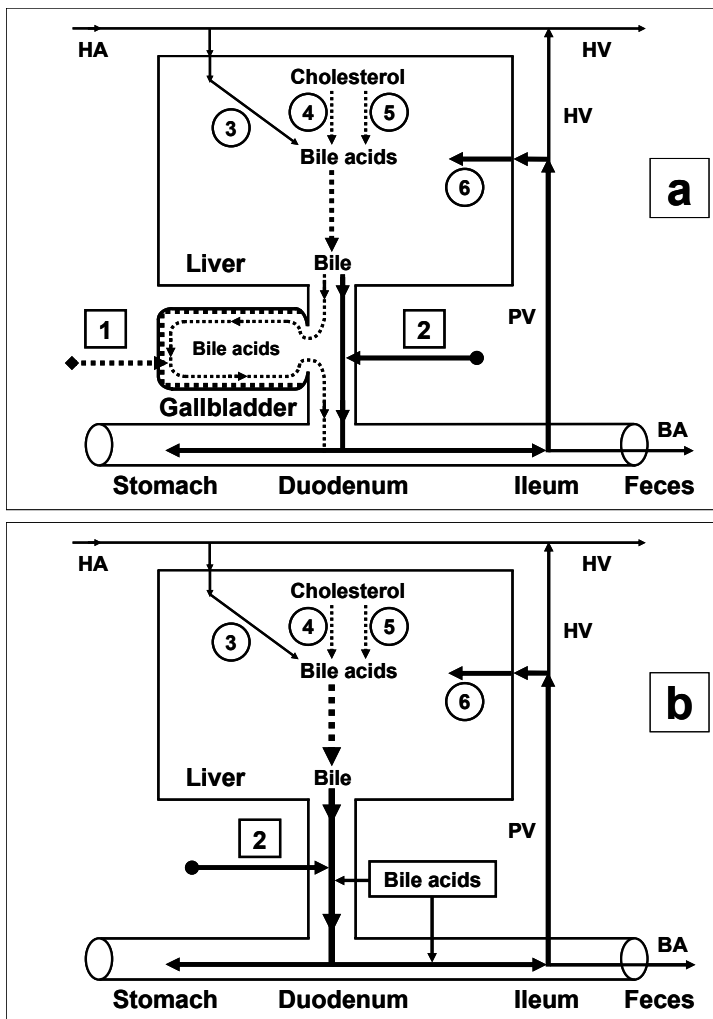
**Fig. 8. "Passive" passage of hepatic bile into the gallbladder and into the duodenum** in patients with chronic acalculous cholecystitis with biliary sludge. **1** = Unconcentrated hepatic bile; **2** = low concentrated gallbladder bile.

The decrease of the water absorption rate of in the gallbladder wall limits the "passive" passage of the hepatic bile into the gallbladder and increases the hepatic bile passage into the duodenum (fig. 8) (41-43).



**Fig. 9. Exchange of cholesterol** in patients with chronic acalculous cholecystitis and chronic calculous cholecystitis. **1** = gallbladder-dependent output of biliary cholesterol; **2** = gallbladder-independent output of biliary cholesterol; **3** = gallbladder-hepatic circulation of biliary cholesterol; **4** = hydrolysis of cholesterol esters entered the hepatocytes with HDL and LDL; **5** = synthesis of cholesterol; **6** = synthesis of cholesterol esters for VLDL; **7** = hydrolysis of cholesterol esters entered the hepatocytes with CMR. **ChA** = cholesterol anhydrous; **ChM** = cholesterol monohydrate; **HA** = hepatic artery; **HV** = hepatic vein; **PV** = portal vein; **LD** = lymphatic duct.

The decrease of the evacuation function of the gallbladder reduces the "active" passage of the hepatic bile into the gallbladder (44, 45). This process is accompanied by the decrease of the total bile acids concentration and the increase of the biliary cholesterol concentration in phospholipid vesicles and it also promotes the increase of time for precipitation of cholesterol monohydrate crystals and the formation of cholesterol gallstones (fig. 9) (46-50).



**Fig. 10. Enterohepatic circulation of bile acids** in patients with chronic calculous cholecystitis **(a)** and patients after cholecystectomy **(b)**. **1** = gallbladder-dependent enterohepatic circulation of bile acids; **2** = gallbladder-independent enterohepatic circulation of bile acids; **3** = bile acids entering the liver through the hepatic artery; **4** = synthesis of cholic acid: cholesterol-7 $\alpha$ -hydroxylase; **5** = synthesis of chenodeoxycholic acid: cholesterol-27-hydroxylase; **6** = bile acids entering the liver through the portal vein.

**BA** = bile acids;  
**HA** = hepatic artery;  
**HV** = hepatic vein;  
**PV** = portal vein.

The excessive hepatic bile passage from the liver into the duodenum increases the frequency of the gallbladder independent enterohepatic circulation of bile acids. The gallbladder-



independent enterohepatic circulation of bile acids in patients with the cholesterol gallstone disease or after cholecystectomy is raised (fig. 10).

It results in: 1) the increase of the hydrophobic hepatotoxic deoxycholic acid formation (table 3) and its accumulation in hepatocytes (51), 2) the formation of morphological changes in the liver (nonspecific reactive hepatitis) (52) and 3) the appearance of cholestasis (53).

The risk of cancer of the liver, the pancreas, the small intestine, and the colon increases as well (54-62). The increases of deoxycholic acid, participating in the enterohepatic circulation, and of other toxic agents in the hepatic bile can result in chronic pancreatitis and duodeno-gastral reflux (63-66).

#### References:

1. Hofmann AF. Bile secretion and the enterohepatic circulation of bile acids. In: Feldman M, Scharshmidt BF, Sleisenger MH, editors. *Gastrointestinal and Liver Disease: Pathophysiology, Diagnosis, Management*. 6th ed. Philadelphia: Saunders, 1998: 937-948.
2. Heuman DM, Hylemon PB, Vlahcevic ZR. Regulation of bile acid synthesis. III. Correlation between biliary bile acid hydrophobicity index and the activities of enzymes regulating cholesterol and bile acid synthesis in the rat. *J Lipid Res* 1989; **30**: 1161-1171.
3. Hofmann AF. Bile acids. In: Arias IM, Boyer JL, Fausto N, Jakoby WB, Schachter DA, Shafritz DA, editors. *The Liver, Biology and Pathobiology*. 3rd ed. New York: Raven Press, 1994: 677-718.
4. Roda A, Piazza F, Baraldini M, Speconi E, Guerra MC, Cerre C, Forti GC. Taurohyodeoxycholic acid protects against taurochenodeoxycholic acid-induced cholestasis in the rat. *Hepatology* 1998; **27**: 520-525.
5. Scholmerich J, Baumgartner U, Miyai K, Gerok W. Tauroursodeoxycholate prevents tauroolithocholate-induced cholestasis and toxicity in rat liver. *J Hepatol* 1990; **10**: 280-283.
6. Lim AG, Ahmed HA, Jazrawi RP, Levy JH, Northfield TC. Effects of bile acids on human hepatic mitochondria. *Eur J Gastroenterol Hepatol* 1994; **6**: 1157-1163.
7. Paumgartner G, Beuers U. Bile acids and the liver. In: Surrenti C, Casini A, Milani S, Pinzani M, editors. *Fat-storing Cells and Liver Fibrosis*. Dordrecht: Kluwer Academic Publishers, 1994: 330-339.
8. Ochsenkuhn T, Bayerderffer E, Meining A, Schinkel M, Thiede C, Nussler V, Sackmann M, Hatz R, Neubauer A, Paumgartner G. Colonic mucosal proliferation is related to serum deoxycholic acid levels. *Cancer* 1999; **85**: 1664-1669.
9. Shekels LL, Beste JE, Ho SB. Tauroursodeoxycholic acid protects in vitro models of human colonic cancer cells from cytotoxic effects of hydrophobic bile acids. *Lab Clin Med* 1996; **127**: 57-66.
10. Carey MC, Duane WC. Enterohepatic circulation. In: Arias IM, Boyer JL, Fausto N, Jakoby WB, Schachter DA, Shafritz DA, editors. *The Liver, Biology and Pathobiology*. 3rd ed. New York: Raven Press, 1994: 719-767.
11. Ewerth S, Angelin B, Einarsson K, Nilsell K, Bjorkhem I. Serum concentrations of ursodeoxycholic acid in portal venous and systemic venous blood of fasting humans as determined by isotope dilution-mass spectrometry. *Gastroenterology* 1985; **88**: 126-133.
12. Malavolti M, Ceryak S, Fromm H. Modulation of bile secretion by hepatic low-density lipoprotein uptake and by chenodeoxycholic acid and ursodeoxycholic acid treatment in the hamster. *Gastroenterology* 1987; **93**: 1104-1115.
13. Malavolti M, Fromm H, Ceryak S, Roberts IM. Modulation of low-density lipoprotein receptor activity by bile acids: differential effects of chenodeoxycholic and ursodeoxycholic acids in hamster. *J Lipid Res* 1987; **28**: 1281-1295.
14. Ceryak S, Bouscarel B, Malavolti M, Robins SJ, Fromm H. Effect of ursodeoxycholic bile acid on hepatic LDL metabolism in dietary hypercholesterolemic hamsters. *Gastroenterology* 1996; **110**: A1165.
15. Fromm H, Bouscarel B, Ceryak S, Malavolti M. Direct effects of bile acids on low-density lipoprotein metabolism. In: Fromm H, Leuschner U, editors. *Bile Acids-Cholestasis-Gallstones. Advances in Basic and Clinical Bile Acid Research*. Dordrecht: Kluwer, 1996: 141-144.
16. Maton PN, Ellis HJ, Higgins JP, Dowling RH. Hepatic HMG-CoA reductase in human cholelithiasis: effect of chenodeoxycholic and ursodeoxycholic acids. *Europ J Clin Invest* 1980; **10**: 325-332.
17. Vlahcevic ZR, Heuman DH, Hylemon PB. Regulation of bile acid synthesis. *Hepatology* 1991; **13**: 590-600.
18. Vlahcevic ZR. Regulation of cholesterol 7 $\alpha$ -hydroxylase by different effectors. *Ital J Gastroenterol* 1996; **28**: 337-339.
19. Lindbland L, Lundholm K, Schersten T. Influence of cholic and chenodeoxycholic acid on biliary cholesterol secretion in man. *Europ J Clin Invest* 1977; **7**: 383-388.

20. **Sama C**, LaRusso NF, Loper del Pino V, Thistle JL. Effects of acute bile acid administration on biliary lipid secretion in healthy volunteers. *Gastroenterology* 1982; **82**: 515-525.
21. **Carulli N**, Loria P, Bertolotti M. Effects of acute change of bile acid pool composition on biliary lipid secretion. *J Clin Invest* 1984; **74**: 614-624.
22. Carey MC. Pathogenesis of gallstones. *Amer J Surg* 1993; **165**: 410-419.
23. **Carey MC**. Formation and growth of cholesterol gallstones: the new synthesis. In: Fromm H, Leuschner U, editors. Bile Acids-Cholestasis-Gallstones. Advances in Basic and Clinical Bile Acid Research. Dordrecht: Kluwer, 1996: 147-175.
24. **Lichtenberg D**, Ragimova S, Bor A, Almog S, Vinkler C, Peled Y, Halpern Z. Stability of mixed micellar systems made by solubilizing phosphatidylcholine-cholesterol vesicles by bile salts. *Hepatology* 1990; **12**: 149S-154S.
25. **Van de Heijning BJM**, Stolk MFJ, van Erpecum KJ, Renooij W, van Berge Henegouwen GP. The effects of bile salt hydrophobicity on model bile vesicles morphology. *Biochim Biophys Acta* 1994; **1212**: 203-210.
26. **Einarsson K**, Grundy SM. Effects of feeding cholic and chenodeoxycholic acid on cholesterol absorption and hepatic secretion of biliary lipids in man. *J Lipid Res* 1980; **21**: 23-34.
27. **Ponz de Leon M**, Carulli N. The influence of bile acid pool composition on the regulation of cholesterol absorption. In: Paumgartner G, Stiehl A, Gerok W, editors. Bile Acids and Lipids. London: MTP Press, 1981: 133-140.
28. **Sama C**, LaRusso NF. Effect of deoxycholic, chenodeoxycholic, and cholic acids on intestinal absorption in humans. *Mayo Clin Proc* 1982; **57**: 44-50.
29. **Lanzini A**, Northfield TC. Effect of ursodeoxycholic acid on biliary lipid coupling and on cholesterol absorption during fasting and eating in subjects with cholesterol gallstones. *Gastroenterology* 1988; **95**: 408-416.
30. **Christl SU**, Bartram HP, Paul A, Kelber E, Scheppach W, Kasper H. Bile acid metabolism by colonic bacteria in continuous culture: effects of strach and pH. *Ann. Nutrition metabolism* 1997; **41**: 45-51.
31. **Farkkila MA**, Turunen VM, Miettinen TA. The role of intestinal bacteria in regulation of cholesterol metabolism. *Gastroenterology* 1994; **106**: A891.
32. **Golubev SS**, Kozlova NM, Turumin JL, Raevskaja LJu. The expression of cyclooxygenase-2 in the gallbladder wall of the patients with chronic calculous cholecystitis. *Acta Gastroenterologica Belgica* 2007; **70**: A31.
33. **Kozlova NM**, Turumin JL, Galeev YM, Popov MV. The functional state of hepato-biliary system in the patients with chronic calculous cholecystitis in the stage of exacerbation. *Acta Gastroenterologica Belgica* 2007; **70**: A33.
34. **Roda E**. Changes of biliary lipid secretion and bile acid pool size in pathogenesis of cholesterol gallstones. Bile Acids-Cholestasis-Gallstones – Advances in Basic and Clinical Bile Acid Research (Falk Symposium No. 84), 1995: A26.
35. **Roda E**, Cipolla A, Bazzoli F. Modifications in biliary lipid secretion and bile acid kinetics in the pathogenesis of cholesterol gallstones. In: Fromm H, Leuschner U, editors. Bile Acids-Cholestasis-Gallstones. Advances in Basic and Clinical Bile Acid Research. Dordrecht: Kluwer, 1996: 176-179.
36. **Honda A**, Yoshida T, Tanaka N, Matsuzaki Y, He B, Shoda J, Osuga T. Increased bile acid concentration in liver tissue with cholesterol gallstone disease. *J Gastroenterol* 1995; **30**: 61-66.
37. **Lesage GD**, Schteingart CD, Hofmann AF. Effect of bile acid hydrophobicity on biliary transit time and intracellular mobility: a comparison of four fluorescent bile acids analogues. *Gastroenterology*. 1994; **106**: A929.
38. **Farrel GC**. Liver disease caused by drugs, anesthetics, and toxins. In: Feldman M, Scharschmidt BF, Sleisenger MH, editors. Sleisenger and Fordtran's Gastrointestinal and Liver Disease: Pathophysiology, Diagnosis, Management. 6<sup>th</sup> ed. Philadelphia: WB Saunders Company, 1998: 1221-1252.
39. **Sherlock S**, Dooley J. Diseases of the liver and biliary system. 9<sup>th</sup> ed. Oxford: Blackweel Scientific Publications, 1993. 649 p.
40. **Lee SP**, Park HZ, Madani H, Kaler EW. Partial characterization of a nonmicellar system of cholesterol solubilization in bile. *Amer J Physiol* 1987; **252**: G374-G384.
41. **Turumin JL**, Shanturov VA. Pathogenesis and treatment of cholesterol gallstone disease. XIV International Bile Acid Meeting "Bile Acids in Hepatobiliary Diseases – Basic Research and Clinical Application" (Falk Symposium No. 93), 1996: A104.
42. **Jacyna MR**, Ross PE, Hopwood H, Bouchier IAD. Studies on the mechanism of non-visualization of diseased human gallbladders during oral cholecystography. *Postgrad Med J* 1988; **64**: 931-935.
43. **Turumin JL**, Shanturov VA. The disturbance of the gallbladder bile formation in-patients with cholesterol gallstone disease. XIV International Bile Acid Meeting "Bile Acids in Hepatobiliary Diseases – Basic Research and Clinical Application" (Falk Symposium No. 93), 1996: A105.
44. **Jazrawi PP**, Pazzi P, Petroni ML, Northfield TC. Postprandial refilling and turnover of bile: a novel ap-



- proach to assessing gallbladder stasis in cholelithiasis. *Gastroenterology* 1995; **109**: 582-591.
45. **Carey MC.** Formation and growth of cholesterol gallstones: the new synthesis. In Fromm H, Leuschner U, editors. *Bile Acids-Cholestasis-Gallstones. Advances in Basic and Clinical Bile Acid Research.* Dordrecht: Kluwer, 1996: 147-175.
  46. **Carey MC,** Cahalane MJ. Whither biliary sludge? *Gastroenterology* 1988; **95**: 508-523.
  47. **Carey MC,** LaMont JT. Cholesterol gallstone formation. 1. Physical-chemistry of bile and biliary lipid secretion. *Prog Liver Dis* 1992; **10**: 139-163.
  48. **LaMont JT,** Carey MC. Cholesterol gallstone formation. 2. Pathogenesis and pathomechanics. *Progr Liver Dis* 1992; **10**: 165-191.
  49. **Carey MC.** Pathogenesis of gallstones. *Amer J Surg* 1993; **165**: 410-419.
  50. **Carey MC.** Pathogenesis of cholesterol and pigment gallstones: some radical new concepts. In: Gerok W, Loginov AS, Pokrowskij VI, editors. *New Trends in Hepatology* 1996. Dordrecht: Kluwer, 1996: 64-83.
  51. **Honda A,** Yoshida T, Tanaka N, Matsuzaki Y, He B, Shoda J, Osuga T. Increased bile acid concentration in liver tissue with cholesterol gallstone disease. *J Gastroenterol* 1995; **30**: 61-66.
  52. **Geraghty JM,** Goldin RD. Liver changes associated with cholecystitis. *J Clin Pathol* 1994; **47**: 457-60.
  53. **Zubovski GA.** Radio and ultrasonic diagnosis of biliary tract diseases. Moscow: Medicine, 1987: 36-174.
  54. **Bayerderffer E,** Mannes GA, Richter WO, Ochsenkuhn T, Wiebecke B, Kepcke W, Paumgartner G. Increased serum deoxycholic acid levels in men with colorectal adenomas. *Gastroenterology* 1993; **104**: 145-151.
  55. **Bayerderffer E,** Mannes GA, Richter WO, Ochsenkuhn T, Seeholzer G, Kepcke W, Wiebecke B, Paumgartner G. Decreased high-density lipoprotein cholesterol and increased low-density cholesterol levels in patients with colorectal adenomas. *Ann Intern Med* 1993; **118**: 481-487.
  56. **Bayerderffer E,** Mannes GA, Ochsenkuhn T, Dirschedl P, Paumgartner G. Variation of serum bile acids in patients with colorectal adenomas during a one-year follow-up. *Digestion* 1994; **55**: 121-129.
  57. **Bayerderffer E,** Mannes GA, Ochsenkuhn T, Dirschedl P, Wiebecke B, Paumgartner G. Unconjugated secondary bile acids in the serum of patients with colorectal adenomas. *Gut* 1995; **36**: 268-273.
  58. **Ekbom A,** Yuen J, Adami HO, McLaughlin JK, Chow WH, Persson I, Fraumeni JF. Cholecystectomy and colorectal cancer. *Gastroenterology* 1993; **105**: 142-147.
  59. **Goldbohm RA,** van den Brandt PA, van Veer P, Dorant E, Sturmans F, Hermus RJ. Cholecystectomy and colorectal cancer: evidence from a cohort study on diet and cancer. *Int J Cancer* 1993; **53**: 735-739.
  60. **Johansen C,** Chow WH, Jorgensen T, Mellekjær L, Engholm G, Olsen JH. Risk of colorectal cancer and other cancers in patients with gallstones. *Gut* 1996; **39**: 439-443.
  61. **Chow WH,** Johansen C, Gridley G, Mellekjær L, Olsen JH, Fraumeni JF. Gallstones, cholecystectomy and risk of cancers of the liver, biliary tract and pancreas. *Br J Cancer* 1999; **79**: 640-644.
  62. **Strom BL,** Soloway RD, Rios-Dalenz J, Rodriguez-Martinez HA, West SL, Kinman JL, Crowther RS, Taylor D, Polansky M, Berlin JA. Biochemical epidemiology of gallbladder cancer. *Hepatology* 1996; **23**: 1402-1411.
  63. **Barthet M,** Affriat C, Bernard JP, Berthezene P, Dagorn JC, Sahel J. Is biliary lithiasis associated with pancreatographic changes? *Gut* 1995; **36**: 761-765.
  64. **Portincasa P,** Di Ciaula A, Palmieri V, Velardi A, VanBerge Henegouwen G.P, Palasciano G. Impaired gallbladder and gastric motility and pathological gastro-oesophageal reflux in gallstone patients. *Eur J Clin Invest* 1997; **27**: 653-661.
  65. **Stein HJ,** Kauer WKH, Feussner H, Siewert JR. Bile acids as components of the duodenogastric refluxate: detection, relationship to bilirubin, mechanism of injury, and clinical relevance. *Hepatogastroenterology* 1999; **46**: 66-73.
  66. **Fukumoto Y,** Murakami F, Andoh M, Mizumachi S, Okita K. Effects of the elevation of serum bile acids on gastric mucosal damage. *Hepatol Res* 1999; **14**: 195-203.